

Hanging Presenter – Slot (GCP04)

General Requirements

- **Artwork submitted to Givex should be final. Please review your artwork and card back before sending to avoid additional proofing costs.** The proof you review is meant to be a confirmation of the files submitted. Drafts must occur before submitting artwork.
- Artwork submitted that is not to specification will result in delays and appropriate charges if modification is needed.
- Please be sure to include all supporting files such as fonts and logos/images.
- Givex offers design services. Please speak to your Givex Sales Representative for additional information.

Font Requirements

- If possible convert your fonts to curves, otherwise please ensure that you supply all fonts used. True Type fonts are not accepted.

Page Bleed Requirements

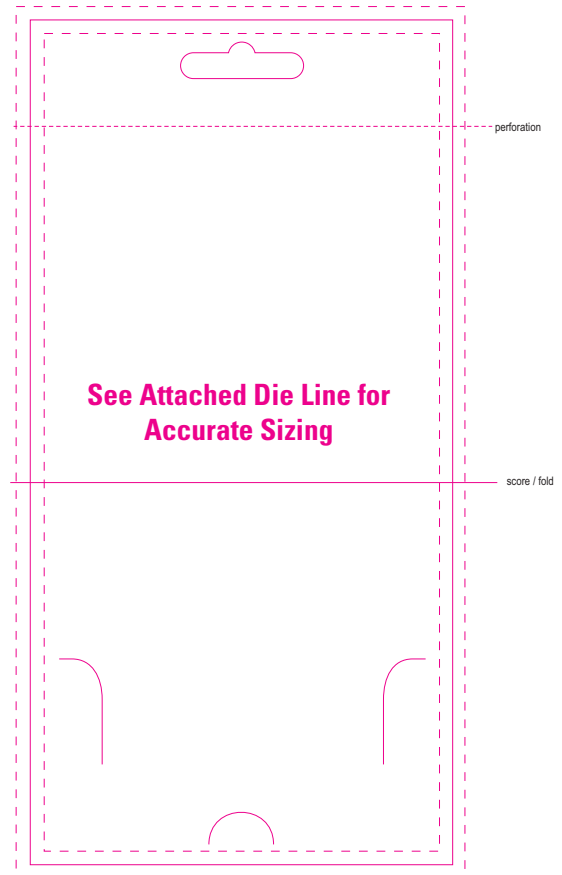
- Please allow for 0.125" bleed around artwork.
- Please do not include crop marks or die lines in your artwork.

Color Requirements

- Artwork pricing is based on CMYK/CMYK
- All RGB images need to be converted to CMYK.
- If spot/Pantone colors are required, please speak to a Givex sales representative for a revised quotation. Spot colors require special attention and will add cost to the manufacturing process.

Image Requirements

- Bitmapped pictures must be TIFF or EPS files, 300dpi to scale (Givex cannot accept web or low resolution images).
- Vector artwork must be in Illustrator EPS format.
- Final layout should be done in QuarkXpress, TIFF or EPS (Mac platform). **Please do not supply PDF files.**
- Please do not supply images over 300 dpi at final size.
- Please ensure that the dimensions of your artwork are not larger than specified.
- Please remove any unused graphical elements from the artboard.



Shipped Flat (as above) = 4" x 8"

Attached Die Line at Final Size

Submission

- Submit files to your Givex sales representative by email or on CD, or please provide FTP access. Please note files sent via email must be compressed prior to sending.
- Please speak to your Givex sales representative if you are unclear or require additional information.